

# CIVIC CENTER TRACK FLOORING REPLACEMENT

**OWNER:**

# CITY OF FARMINGTON, MISSOURI

**ISSUANCE:**

ISSUED FOR REBID - AUGUST 5, 2025

**FGM Architects**  
1 Metropolitan Sq, Ste. 1945  
St. Louis, Missouri 63102  
Phone : 314.439.1601  
Fax : 314.439.1602  
[www.fgmarchitects.com](http://www.fgmarchitects.com)

<b>EXPIRES:</b>
<b>SIGNATURE:</b>
<b>DATE SIGNED:</b>

**FGM Architects**  
1 Metropolitan Sq, Ste. 1945  
St. Louis, Missouri 63102

314.439.1601 OFFICE

MISSOURI CERTIFICATE OF  
AUTHORITY #000311

**ARCHITECT**  
**FGM ARCHITECTS INC.**  
2 METROPOLITAN SQUARE, SUITE 1945  
ST. LOUIS, MISSOURI, 63102  
314.439.1601 (O) 314.439.1602 (F)  
MO STATE CERTIFICATE OF AUTHORITY  
NO. 000311

DAVID KEHM - ARCHITECT  
ST #A-6257

The professional architect seal affixed to this sheet applies only to material and items shown on this sheet. All drawings, instruments or other documents not exhibiting this seal shall not be considered prepared by this architect, and this architect expressly disclaims all and all responsibility for such plan, drawings or documents not exhibiting this seal. Revisions to technical submissions which are made or approved by the licensee are prohibited.

DATE 11/30/2024

[illegible]

**CIVIC CENTER TRACK FLOORING REPLACEMENT**  
CITY OF FARMINGTON, MISSOURI  
2 BLACK KNIGHT DRIVE  
FARMINGTON, MISSOURI 63640

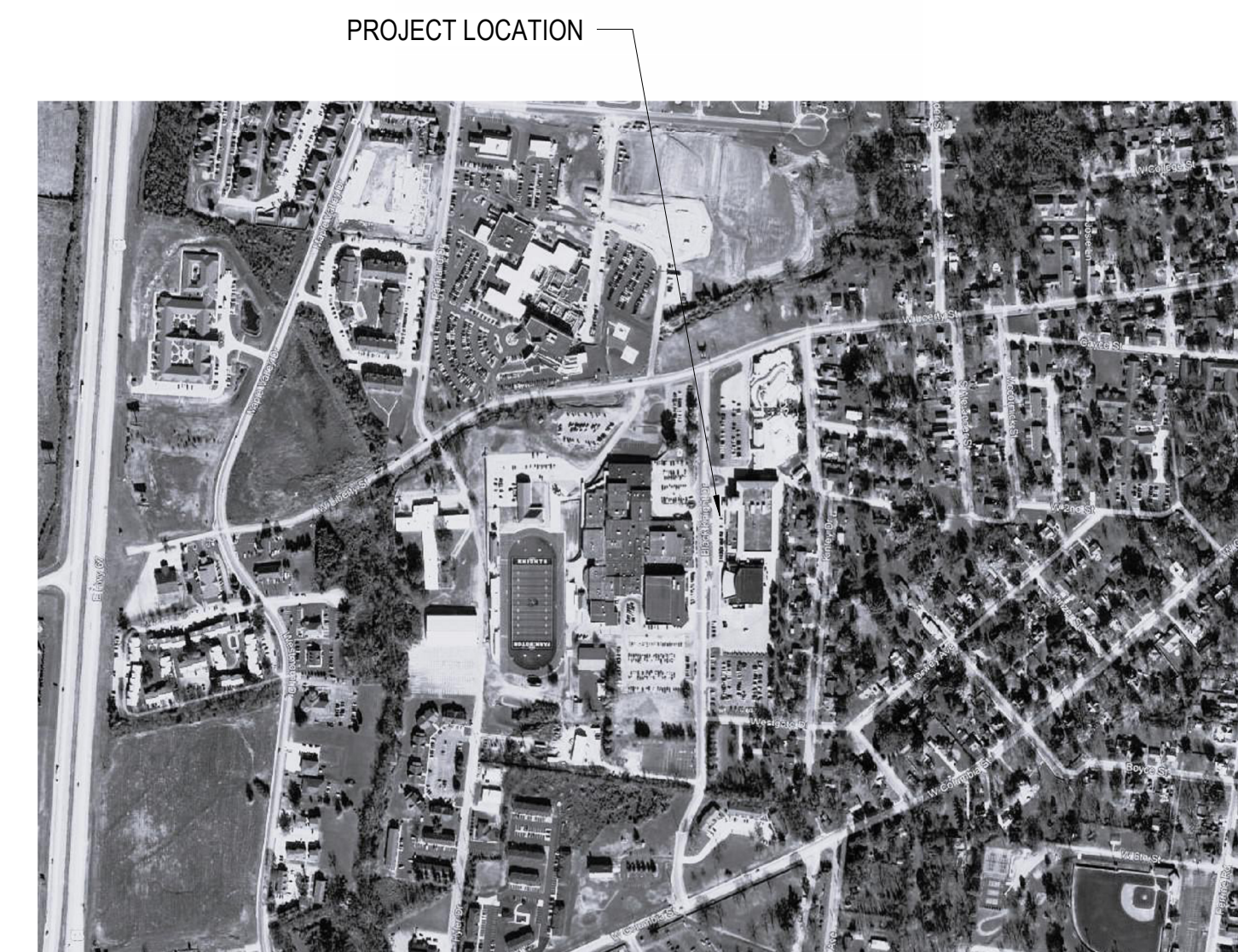
ISSUED FOR BERID

COVER SHEET

**SHEET NO.**

## GO.0

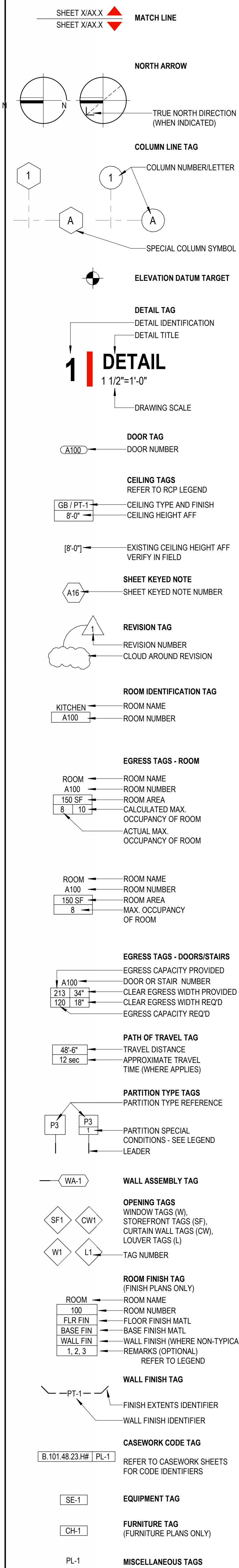
JOB NO. 23-3849.02  
© 2025 FGM Architect



## 1 VICINITY MAP



## GRAPHIC AND MATERIAL SYMBOLS

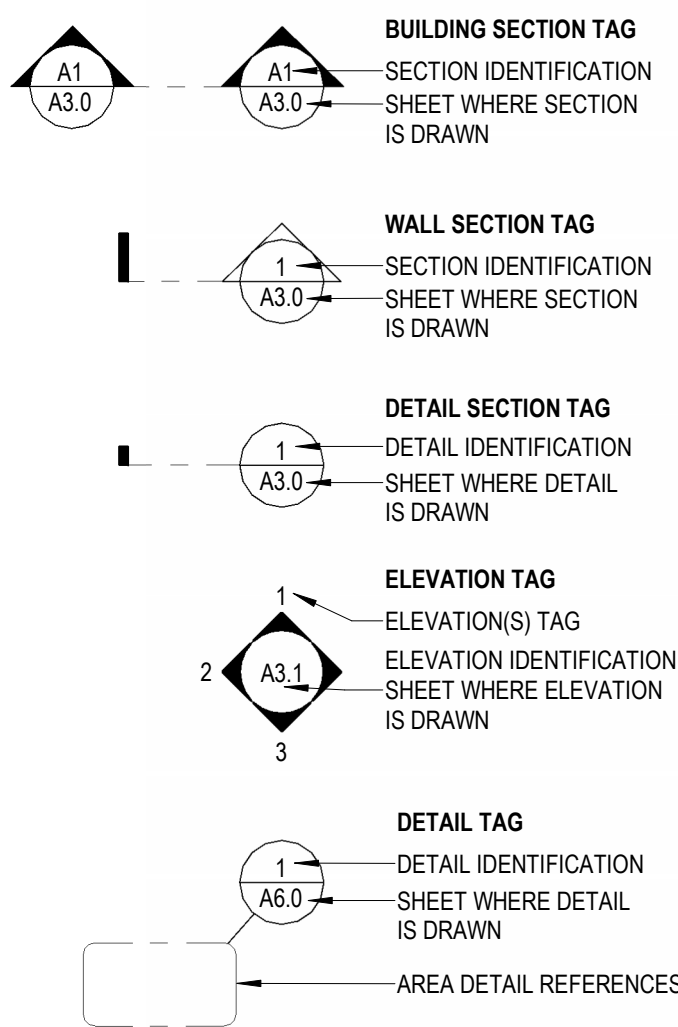


## TAGS & ANNOTATIONS

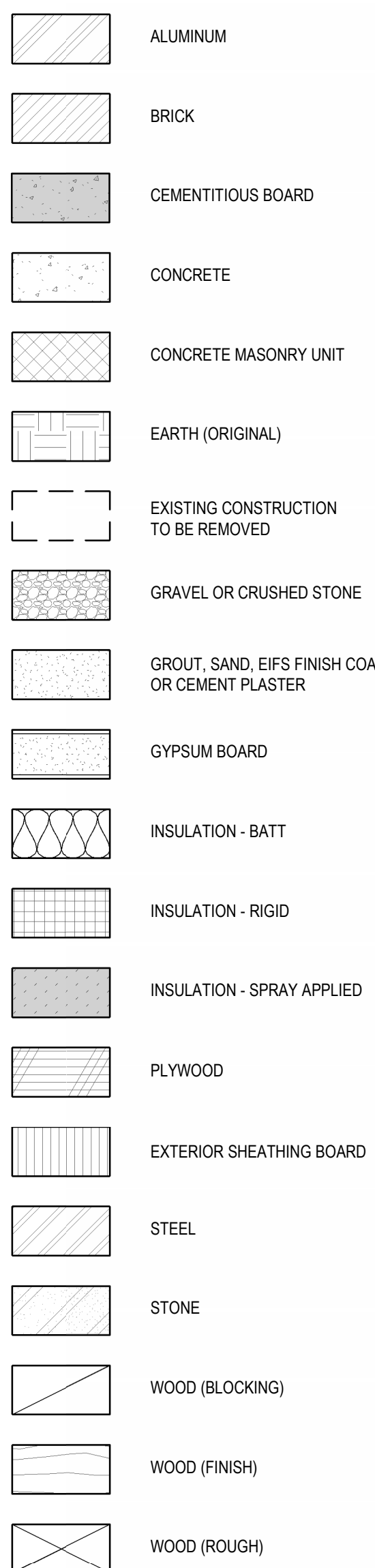
## ABBREVIATIONS

8	AND	DWG	DRAWING	JT	JOINT	SC	SEALED CONCRETE
9	ANGLE	E.P.	ELECTRICAL PANEL	KW	KILOWATT	SCHED	SCHEDULE
10	AT	EA	EACH	LAM	LAMINATE	SCT	STATIC CONDUCTIVE TILE
11	CENTER LINE	EF	EPOXY FLOOR COATING	LAV	LAVATORY	SDC	DECORATIVE SEALED CONCRETE
12	DIAMETER OR ROUND	EIFS	EXTERIOR INSULATION AND FINISH SYSTEMS	LF	LIGHT FIXTURE	SDT	STATIC DISSIPATIVE TILE
13	POUND OR NUMBER	EJ	EXPANSION JOINT	LL	LIVE LOAD	SECT	SECTION
14	ACOUSTICAL CEILING	ELEC	ELECTRICAL	LN	LINOLEUM FLOORING	SF	SQUARE FEET
15	ACCESSIBLE	ELEV	ELEVATION	LP	LOW POINT	SHT	SHEET
16	ADJACENT	ENCL	ENCLOSURE	LT	LIGHT	SIM	SIMILAR
17	ABOVE FINISH FLOOR	EQ	EQUAL	LVT	LUXURY VINYL TILE OR PLANK	SPEC	SPECIFICATION
18	ALUMINUM	EQUIP	EQUIPMENT	MATL	MATERIAL	SQ	SQUARE
19	APPROXIMATELY	ERF	EPOXY RESINOUS FLOORING SYSTEM	MAX	MAXIMUM	SS	STAINLESS STEEL
20	ARCHITECTURAL	ERFB	EPOXY RESINOUS FLOORING BASE	MB	MARKER BOARD	SSC	SEALED + STAINED CONCRETE
21	ACOUSTICAL WALL PANEL	EW	ELECTRIC WATER COOLER	MECH	MECHANICAL	SSF	SOLID SURFACE OR SIMULATED STONE MATERIAL
22	BOTTOM OF	EX	EXISTING	MH	MANHOLE	ST	STONE
23	BOARD	EXP	EXPOSED CONSTRUCTION	MIN	MINIMUM	ST.N	STAIR NOSING
24	BITUMINOUS	EXT	EXTERIOR	MISC	MISCELLANEOUS	STB	STONE BASE
25	BLINDS	F.F.	FACTORY FINISH	MO	MASONRY OPENING	STD	STANDARD
26	BUILDING	FA	FIRE ALARM	MTD	MOUNTED	STL	STEEL
27	BLOCKING	FD	FLOOR DRAIN	MTL	METAL	STN	STAIN
28	BRICK	FDN	FOUNDATION	MTLB	METAL WALL BASE	SUSP	SUSPENDED
29	BRONZE	FE	FIRE EXTINGUISHER	MTLC	METAL CEILING PANELS	SYM	SYMMETRICAL
30	CABINET	FEC	FIRE EXTINGUISHER CABINET	NC	NOT IN CONTRACT	T&G	TONGUE AND GROOVE
31	CHALK BOARD	FF	FINISH FLOOR	NO	NUMBER	T.S.	THICK STEEL
32	CEMENTITIOUS	FHC	FIRE HOSE CABINET	NOM	NOMINAL	T/	TOP OF
33	CORNER GUARD	FHVC	FIRE HOSE VALVE CABINET	NTS	NOT TO SCALE	TB	TACK BOARD
34	CAST IRON	FIN	FINISH	OC	ON CENTER	TC	TRAFFIC COATING
35	CONTROL JOINT	FLR	FLOOR	OD	OUTSIDE DIAMETER	THRES	THRESHOLD
36	CLOSET	FLUOR	FLOUORESCENT	OH	OVERHEAD	TP	TOILET PARTITIONS
37	CEILING	FRP	FIBERGLASS REINFORCED POLYESTER	OPNG	OPENING	TR	TREAD
38	CLEAR	FS	FLOOR SINK	OPP	OPPOSITE	TW	TACTILE WARNING
39	CONCRETE MASONRY UNIT	FSR	FLAME SPREAD RATINGS	P.L	PROPERTY LINE	TYP	TYPICAL
40	COLUMN	FT	FOOT OR FEET	PB	PARTICLE BOARD	TZ	TERRAZZO FLOOR
41	CONC	PC	PRECAST	PERP.	PERPENDICULAR	TZB	TERRAZZO BASE
42	CONSTR	FTG	FOOTING	PERP.	PERPENDICULAR	TZST	TERRAZZO STAIR TREAD
43	CONT	GA	GAUGE	PHL	PHENOLIC LAMINATE MATERIAL	UNO	UNLESS NOTED OTHERWISE
44	CONTR	GALV	GALVANIZED STEEL	PL	PLASTIC LAMINATE	V.I.F.	VERIFY IN FIELD
45	CORR	GB	GYPSUM BOARD	PLAS	PLASTER	VCT	VINYL COMPOSITION TILE
46	CPT	GBMU	GLAZED BLOCK MASONRY UNIT	PLUMB	PLUMBING	VDB	VISUAL DISPLAY BOARD
47	CT	GFMU	GROUND FACE MASONRY UNIT	PLYMD	PLYWOOD	VERT	VERTICAL
48	CTB	GFT	GLASS FLOOR TILE	PR	PAIR	WV	VINYL WALL COVERING
49	CUH	GL	GLAZING	PT	PAINT	W.C.	WATER CLOSET
50	CUH	GND	GROUND	QTY	QUANTITY	W.P.	WORKING POINT
51	D.L.	HB	HOSE BIBB	QZ	QUARTZ TILE	W/	WITH
52	DBL	HDWD	HARDWOOD	R	RISER	W/O	WITHOUT
53	DCPH	HDWR	HARDWARE	RAD	RADIUS	WC	WALL COVERING
54	DETENTION CEILING PLANKS (HIGH SECURITY CEILING - JAIL)	HM	HOLLOW METAL	RB	RESILIENT BASE	WCPT	WALKOFF CARPET
55	DERF	HORIZ	HORIZONTAL	RCB	RESILIENT COVE BASE	WD	WOOD
56	DET	HP	HIGH POINT	RCP	REFLECTED CEILING PLANK	WDB	WOOD BASE
57	DF	HPC	HIGH PERFORMANCE COATING	RO	ROOF DRAIN	WDC	WOOD CEILING PANELS
58	DFC	HT	HEIGHT	REC	RECESSED	WDF	WOOD FLOORING
59	DIA	I.D.	INSIDE DIAMETER	REINF	REINFORCED	WDSF	SPORTS FLOORING - WOOD
60	DM	ILCS	LUMINOUS CEILING SYSTEM	REQ	REQUIRED	WF	WINDOW FILM
61	DN	IN	INCH	RF	RESILIENT FLOORING	WP	WALL PROTECTION
62	DO	INSUL	INSULATION	RM	ROOM	WSC	WOOD SOLID CORE
63	DP	INT	INTERIOR	RO	ROUGH OPENING	WT	WEIGHT
64	DPC	INV	INVERT	RS	ROLLER SHADE	WWP	WOOD WALL PANEL
65	DR	JAN	JANITOR	RSB	RESILIENT STRAIGHT BASE	XTR	EXISTING TO REMAIN
66	DS	JC	JANITOR CLOSET	RSF	RESILIENT SPORTS FLOORING	YD	YARD
67	DSM						
68	DISPL						

## TAGS & ANNOTATIONS



## VIEW SYMBOLS



THIS LEGEND IS A GENERIC REPRESENTATION OF MATERIALS SHOWN IN CROSS SECTION AND IS INTENDED FOR GRAPHIC CLARITY ONLY. IT DOES NOT REPRESENT SPECIFIC PRODUCTS, BRANDS, OR OTHERWISE INDICATE PERFORMANCE REQUIREMENTS.

## MATERIAL SYMBOLS

## GENERAL ARCHITECTURAL NOTES

## GENERAL ARCHITECTURAL NOTES

#### A. FIRE RESISTANCE COMPLIANCE

A.06 ALL RATINGS ARE TO COMPLY WITH UNDERWRITERS LABORATORIES (UL) TEST RATINGS

## B. DIMENSIONING

B.02 ALL DIMENSIONS SHALL BE VERIFIED IN THE FIELD AND COORDINATED WITH THE WORK OF ALL TRADES PRIOR TO PROCEEDING WITH THE WORK. NOTIFY ARCHITECT OF DISCREPANCIES.

#### D. MISCELLANEOUS NOTES

D.01 WHERE DISCREPANCIES EXIST BETWEEN THE DRAWINGS OF THE VARIOUS TRADES, CONSULT THE ARCHITECT BEFORE PROCEEDING WITH WORK.

D.02 ALL DISSIMILAR METALS SHALL BE EFFECTIVELY ISOLATED FROM EACH OTHER TO AVOID GALVANIC REACTION.

D.03 THE CONTRACTOR SHALL BE RESPONSIBLE FOR ANY AND ALL DAMAGE DURING CONSTRUCTION. THE CONTRACTOR WILL REPAIR AND/OR REPLACE ALL DAMAGED MATERIALS TO NEW CONDITION.

D.04 ALL REFUSE AND DEBRIS SHALL BE REMOVED FROM THE SITE AND LEGALLY DISPOSED OF BY THE CONTRACTOR.

## GENERAL NOTES

1. DO NOT SCALE THE DRAWINGS. THE DRAWINGS ARE NOT NECESSARILY TO SCALE. THE CONTRACTOR SHALL VERIFY ALL CONDITIONS AND DIMENSIONS AT THE JOB SITE PRIOR TO THE BEGINNING OF CONSTRUCTION. IF DISCREPANCIES ARE FOUND, THE ARCHITECT SHALL BE NOTIFIED FOR CLARIFICATION BEFORE COMMENCING THE WORK. EXPLICIT DIMENSIONS SHALL HAVE PRECEDENCE OVER SCALE.
2. ALL CONSTRUCTION SHALL BE IN ACCORDANCE WITH THE REQUIREMENTS OF THE APPLICABLE CODES.
3. THE OWNER WILL NOT ACCEPT REQUESTS FOR ADDITIONAL COSTS FOR WORK CONDITIONS WHICH CAN BE REASONABLY ASCERTAINED FROM THE DRAWINGS AND SPECIFICATIONS.
4. ASBESTOS-CONTAINING MATERIALS, LEAD-CONTAINING PAINT OR OTHER INDUSTRY REGULATED OR HAZARDOUS MATERIALS OR TOXIC SUBSTANCES SHALL NOT BE USED ON THIS PROJECT.

## APPLICABLE BUILDING CODES

2015 INTERNATIONAL BUILDING CODE

INDEX OF DRAWINGS	
SHEET NUMBER	SHEET NAME
GENERAL	
G0.0	COVER SHEET
G0.1	ARCHITECTURAL SYMBOLS, ABBREVIATIONS & GENERAL NOTES
ARCHITECTURAL DEMO	
AD1.0	OVERALL CIVIC CENTER DEMOLITION PLAN
ARCHITECTURAL	
A1.0	OVERALL CIVIC CENTER FLOOR PLAN

**fgma**  
FGMArchitects

**FGM Architects**  
1 Metropolitan Sq., Ste. 1945  
St. Louis, Missouri 63102

314.439.1601 OFFICE

MISSOURI CERTIFICATE OF  
AUTHORITY #00311

**ARCHITECT**  
**FGM ARCHITECTS INC.**  
1 METROPOLITAN SQUARE, SUITE 1045  
ST. LOUIS, MISSOURI, 63102  
314.439.1601 (O) 314.439.1602 (F)  
MO STATE CERTIFICATE OF AUTHORITY  
NO. 000311

\_\_\_\_\_

\_\_\_\_\_

© 2004 Blackwell Publishing Ltd

\_\_\_\_\_

--

\_\_\_\_\_

**DAVID KEHM - ARCHITECT**  
**ST #A-6257**  
The professional architect seal affixed to this sheet applies only to the material and items shown on this sheet. All drawings, instruments or

**DATE 11/30/2024**

ISSUANCE		
NO	DATE	DESCRIPTION

[illegible]

**CIVIC CENTER TRACK FLOORING REPLACEMENT**  
CITY OF FARMINGTON, MISSOURI  
2 BLACK KNIGHT DRIVE  
FARMINGTON, MISSOURI 63640

---

ISSUED FOR REBID

**ARCHITECTURAL SYMBOLS,  
ABBREVIATIONS &  
GENERAL NOTES**

**G0.1**

JOB NO. 23-3849.02  
© 2025 FGM Architects



[illegible]

**CIVIC CENTER TRACK FLOORING REPLACEMENT**  
CITY OF FARMINGTON, MISSOURI  
2 BLACK KNIGHT DRIVE  
FARMINGTON, MISSOURI 63640

**ISSUED FOR REBID**

## OVERALL CIVIC CENTER DEMOLITION PLAN

SHEET NO.

**AD1.0**

JOB NO. 23-3849.02  
© 2025 FGM Architects

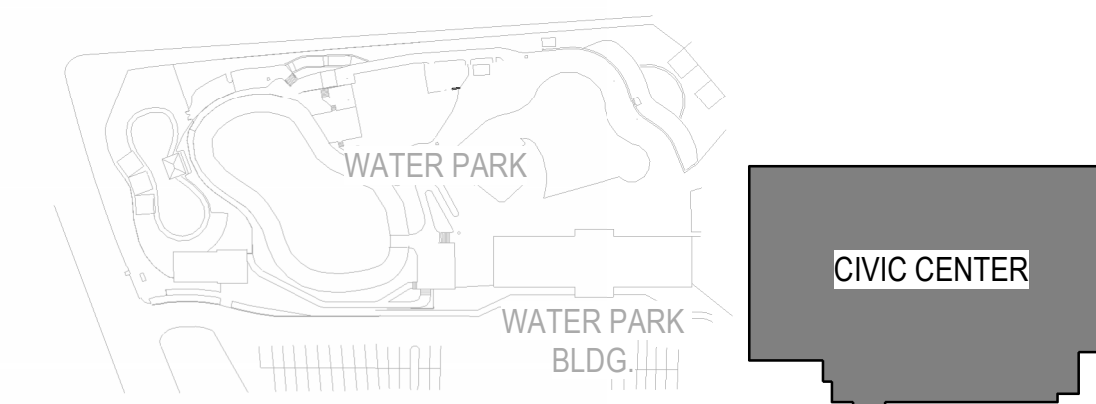
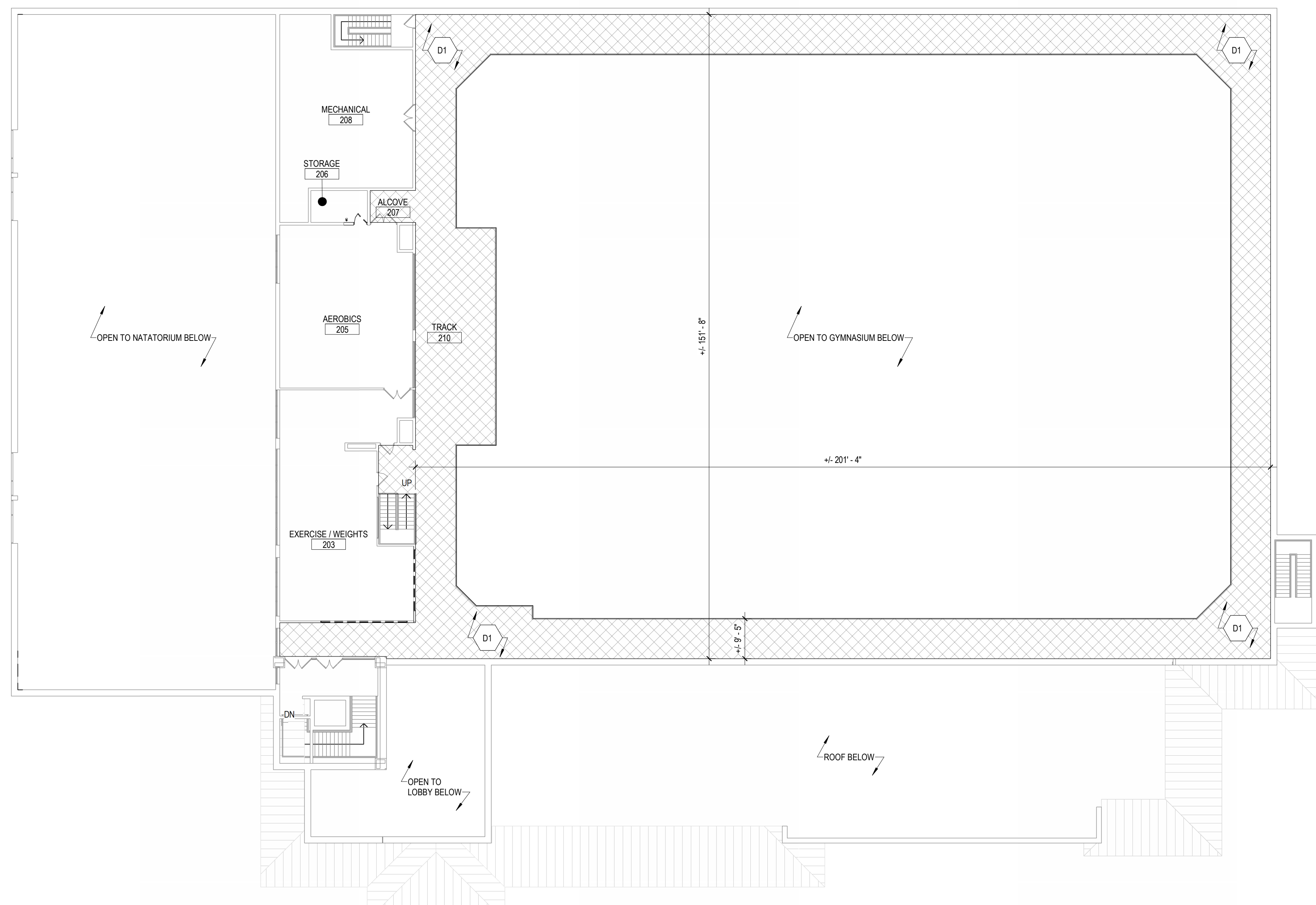
1. REFER TO G-SEE SHEETS FOR TYPICAL ABREVIATIONS, SYMBOLS & TAGS.
2. VERIFY LOCATION AND CONDITION OF WALLS, CEILINGS, FLOORS, EQUIPMENT, FIXTURES AND ALL INCIDENTAL ACCESSORIES, PRIOR TO DEMOLITION. REPORT DISCREPANCIES BETWEEN THE CONSTRUCTION DOCUMENTS AND EXISTING CONDITION TO THE ARCHITECT/JE/ENGINEER.
3. DO NOT BLOCK EXITS OR EGRESSWAYS. MAINTAIN EXITS AS INDICATED, AND IF NOT INDICATED, MAINTAIN AT LEAST TWO EXITS OUT OF ALL AREAS IN ACCORDANCE WITH LOCAL JURISDICTION. AT ALL TIMES DURING DEMOLITION, PROTECT ADJACENT SURFACES TO REMAIN. REPAIR DAMAGED SURFACES SCHEDULED TO REMAIN USING MATERIALS AND METHODS TO MATCH EXISTING CONSTRUCTION.
5. REMOVE ALL DEBRIS FROM SITE ON A DAILY BASIS AND DISPOSE OF LEGALLY.
6. DASHED LINES INDICATE MATERIAL TO BE REMOVED. REMOVE CONSTRUCTION UP TO DEFINED LIMITS. REFER TO SHEET KEY NOTES FOR SPECIFIC INFORMATION.

12" = 1'-0"

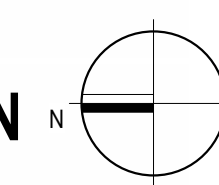
DEMO PLAN KEYED NOTES	
TAG	DESCRIPTION
D1	TAKE PRECAUTION NOT TO DAMAGE THE FINISH ON THE EXISTING WALLS WHEN REMOVING THE VINYL WALL BASE. IF DAMAGED, REPAIR ANY DAMAGE AND REPAINT THE WALL.



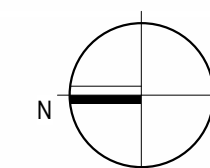
1/8" = 1'-0"



1" = 160'-0"



## 2 CIVIC CENTER OVERALL MEZZANINE DEMO PLAN



1. REFER TO G-SERIES SHEETS FOR TYPICAL ABBREVIATIONS, SYMBOLS & TAGS.

<b>RCB-1</b>	<b>RESILIENT COVE BASE</b>
MANUFACTURER:	JOHNSONITE
PRODUCT:	JOHNSONITE WALL BASE DURACOVE THERMOPLASTIC RUBBER 18" (TYPE TP)
COLOR:	TAB BEDROCK
SIZE:	4" COVE BASE / 18"TH
<b>RSF-1</b>	<b>RESILIENT SPORTS FLOORING</b>
MANUFACTURER:	NWR SPORT
PATTERN / COLOR:	PROXL / FOSSIL S12
SIZE:	1M X 1M (39.4" X 39.4")
THICKNESS:	8MM
FINISH:	MATTE
CONTACT:	SPARTAN SURFACES KATIE DELO kdelo@spartansurfaces.com (314) 952-7610
<b>BID ALTERNATE #1: RSF-2 INSTALLED IN PLACE OF RSF-1</b>	
<b>RSF-2</b>	<b>RESILIENT SPORTS FLOORING</b>
MANUFACTURER:	NWR SPORT
PATTERN / COLOR:	STAMINA / EARTH 190
SIZE:	1.22M X 1.83M (4' X 6')
THICKNESS:	10MM
FINISH:	MATTE
CONTACT:	SPARTAN SURFACES KATIE DELO kdelo@spartansurfaces.com (314) 952-7610
<b>T-1</b>	<b>TRANSITION STRIP</b>
MANUFACTURER:	JOHNSONITE
PRODUCT:	CONTRACTOR TO VERIFY PROFILE WITH EXISTING CONDITIONS
COLOR:	TAB BEDROCK

12" = 1'-0"

